



*The Granite State
Carriage Association*



NEWSLETTER

The Granite State Carriage Association

<http://www.GraniteStateCarriage.org>

SEPTEMBER 2014

**** DON'T MISS THE RAIL TRAIL OUTING COMING ON SEPT. 21****

CORRECTION ON DIRECTIONS

Directions should read as follows:

Potter Place, at Junction of Rt. 11 and Rt. 4 between East Andover and Danbury NH. Parking in very large paved lot. Approx. 20 miles northwest of Concord NH.

Directions: From north or east, take I-93 Exit 20 onto NH Rt. 11/3 West through Tilton. Stay on Rt. 11 through Franklin to Jct. with Rt. 4. Turn right (west) on Rt. 4W/11, go 2.7 miles through Andover to Depot Street on left. Take Depot St. towards Potter Place then right to parking lot. Total 18 miles from I-93 Exit 20.

From south-- through Concord, take I-93 Exit 17 onto NH Rt. 4 West. From where Rt. 11 joins Rt. 4W, go 2.7 miles on 4W/11 through Andover to Depot Street on left. Take Depot St. towards Potter Place then right to parking lot. Total 20 miles from I 93 Exit 17.

Contact Connie Moses, cmoses@metrocast.net 603-490-9694 Please RSVP with interest!

IT'S NOT TOO LATE TO SIGN UP FOR SHELBURNE FARMS DRIVE
STALLS OPEN Sept. 28-Oct. 1

Due to a couple of cancellations, there is still time to reserve your stall(s) at Shelburne Farms this year! Enjoy dirt road and fields carriage driving with sweeping vistas alongside Lake Champlain; the ambience of the Shelburne Inn and fine restaurant; the Shelburne Museum of Americana; the magnificent Adirondack Farm Barn and Breeding Barn... and all that the Shelburne and Burlington Vermont area has to offer.

WITH your horse put up in the historic Coach Barn. Shelburne Farms, the former estate of the Seward/Vanderbilt Webbs, now serves as a 1400-acre educational agricultural institution including a working dairy farm and award-winning cheese production. -- The beautiful grounds were planned by the renowned landscape architect Frederick Law Olmsted (designer of Buffalo park system, Chicago's Riverside Park, Niagara Reservation, Central Park NYC, Biltmore Estate in Asheville to name a few.) --

The nearby Shelburne Museum of Americana is unbelievable! Entire buildings, a Lake Champlain cruise ship, a locomotive with passenger cars are located there to house a huge range of antiquities-- including the Vandermeys' personal collection of antique carriages, sleighs and wagons. A 2-day pass will barely be enough to appreciate it all! -- The area also includes the

Vermont Teddy Bear Factory, UVM, the Morgan Horse Museum, cruises on Lake Champlain, Ben and Jerry's Factory, unique shops in adjacent Burlington VT...

This opportunity to carriage drive at Shelburne is only available to Granite State Carriage Association members, and only once a year. Contact Connie Moses for reservation info for 3 nights: Sept. 28-Oct. 1, Sunday-Wednesday. cmoses@metrocast.net 603-490-9694 Visit -- <http://www.shelburnefarms.org> for a preview, also see <http://www.vermont.org/> <http://shelburnemuseum.org/>

GSCA WEEKEND IN THE NORTHEAST KINGDOM



That first weekend in August was a 10 for Vermont summer weather – beautiful sunny skies, low humidity and temperatures in the 70's. The campground at the Frye Refuge in Danville VT was full with 11 vehicles parking at various times during the weekend.



Laurie Goodwin and Cindy Pirkey arrived a few days early to enjoy some quiet time by the pond. They had a little more weather excitement but with showers mostly at night. On one of their longer drives a thunderstorm brewed up after they passed the Hunt farm, nearly 7 miles from camp. Fortunately they were welcomed by a neighbor who invited them to shelter in his indoor riding arena until the thunder and lightning passed.

Laurie Goodwin & Cindy Pirkey

Greenan and Carolyn Townsend and Carolyn's granddaughter Megan Jette had the most comfortable campsite with a 'patio' that became the favored gathering place for breakfast coffee. Jean Harvey and Pixie earned the *No Worries Award* for including the Town Green on one of their driving loops, calmly navigating past the fried dough booth, carnival rides and other hoopla of the 84th annual Danville Town Fair. Pat Pearson brought a riding horse and she and the Greenan/Townsend party trailered over to the Hunts on Saturday to enjoy the woods trails and the Osterman estate nearby.

It was great to see Connie and Rick Moses with their reliable pair set up camp on Friday. Becky

*Carolyn Townsend,
Megan Jette, Becky
Greenan & Pat
Pearson*



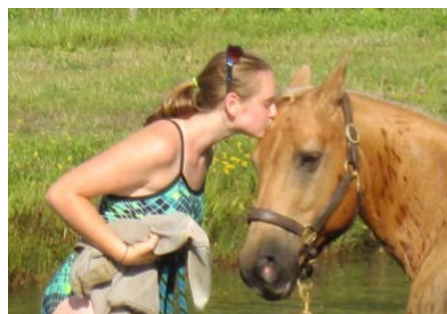
Cindy Schlener and
Corin Brennan
teamed up for a faster
paced ride from the
campground that
included fun on the
cross country course

at the Danville Equestrian Center. Rick and Joan Vanderploeg were able to join the party at the last minute and headed out with their pair after organizing their campsite on Saturday morning.



Megan Jette & horses enjoying the water.

The NEK in August – it's not always swimming weather. But again this year campers were happy to cool off in the swimming pond after riding or driving. Several of the horses enjoyed splashing around as well.



Megan's reward to her horse for going in the water



*Connie Moses and her boys take a rest after
the day's drive.*

GREENFIELD 2014

A Picture is worth a thousand Words

This year about 17 folks camped, some new to camping (the Herricks in their mega-trailer/camper), some camping the old rugged way, (Fink family tenting) and the rest pretty comfy in their trailer/campers, and mobile home! But camping was down a bit from last year, with several day visitors coming to ride or drive. More members & guests arrived Sunday to partake in the BBQ, arranged by Cresca Albright. As we like to think, 'provide food and they will come!' The weather was cooperative and a few folks took a dip in the pond after returning from the trails. As they say, a picture is worth a thousand words. So, here are lots of pictures of folks enjoying Labor Day Weekend in Greenfield which was hosted by the Kokal Family at their sprawling ranch-like HorseTenders Farm, organized by Sonja & Bob Cahill, with Cathy McLeod lending very capable hands on all days. Kudos to all who made Greenfield happen another year.



Jackie Schoendorf, Sarri Holly, Kathy Mercurio



Leslie Baxter & Diane Russell



Keath and Dawn Fortier



Karen Desroches & Cresca Albright



Sonja Cahill, Megan Jett, Carolyn Townsend, Becky Greenan



Sarri Holly and Kathy Mercurio



Sylvia Miskoe, daughter Hillary DeAngelis driving.



Fink family camping, riding and hiking



Dave and Liz Herrick

Dave Herrick in his new camper



Rick & Connie Moses with a French exchange student.



**OPEN HOUSE AT THE
CARRIAGE BARN SEPTEMBER 28TH**

Kensington, NH -- Please join The Carriage Barn for their Fall Open House and Fundraiser on Sunday, September 28th from noon to 2pm, at Trundle Bed Farm on Trundle Bed Lane in Kensington, NH. Meet our staff and horses, see demonstrations and learn more about our programs and Fall schedule. Meet the famous Artful Dodger and play with him in our indoor arena. Raffles and auctions as well as lunch will be available. All proceeds from the day will go to support The Carriage Barn's Equine Assisted Therapy Programs. For more information, please see The Carriage Barn's website (www.carriage-barn.org) or call 603-378-0140.

FOR SALE

2002 Jayco Slide in truck camper in good condition. Stove, refrigerator, heater, air conditioner. Table converts to second bed. Shower/bath combination. Comes with microwave, coffee maker, toaster, table grill, dishes cooking gear, nearly new duvet & linens for bed, towels etc \$3300. John & Ginger Laplante (603)783-4702, canterbrk@aol.com.





UPCOMING EVENTS OF INTEREST

SEPT 12-14 FALL FESTIVAL OF DRIVING Touchstone Farm. Temple, NH. Contact: Barbara Cochrane (603) 654-6308 or info@touchstone-farm.org

SEPT. 14 GSCA BRANCH HILL DRIVE/RIDE. Milton Mills, NH Contact: John & Sue Booth. (603) 664-2787.

SEPT.20-21 GMHA FALL DRIVING CLASSIC. Green Mt. Horse Assn. Woodstock,VT. Contact:Karey Waters, PO Box 8, South Woodstock, VT 05071; W: 802-457-1509, ext. 203; Fax: 802-457-4471; e-mail: karey@gmhainc.org Mail Entries to: Organizer.

SEPT 21 GSCA ANDOVER, NH RAIL TRAIL OUTING. Potter Place RR station 10AM. Contact: Connie Moses cmoses@metrocast.net (603) 490-9694.

Sept. 28 OPEN HOUSE AT THE CARRIAGE BARN. Kensington, NH Contact:603-378-0140 or www.carriage-barn.org

OCT 10-12 GSCA FALL FOLIAGE DRIVE/RIDE.Hancock-, NH. Contact: Cresca Albright (603) 525-3314

OCT. 11 ANNUAL SPURWINK FARM PLEASURE DRIVE. Cape Elizabeth,ME.Contact: <http://www.mainedrivingclub.org/>

**THE GRANITE STATE CARRIAGE ASSOCIATION, INC.
A PLEASURE DRIVING CLUB
DRIVE WITH US JUST FOR THE FUN OF IT (Riders Welcome)
PLEASE PRINT CLEARLY!**

Name (include all family members): _____

Address: _____ State _____ Zip: _____

Phone _____ E-Mail _____

Facebook username or e-mail _____ New Membership ____ Renewal _____

Add \$1.00 for Maine Driving Club Associate Membership? _____ TOTAL SENT _____

Any Changes from last listing? Yes No What? _____

Annual Membership Single or Family \$20.00.

Please make checks payable to: GSCA. For more info. call: Treasurer Eric Wilking (603) 731-0513
Mail to: Eric Wilking. 162 Pickpocket Rd. Brentwood, NH 03833



Puzzle. And the cow gets the last laugh.

THE GRANITE STATE CARRIAGE ASSOCIATION

Virginia G. Laplante, Editor

137 Old Tilton Road

Canterbury, New Hampshire 03224



*The Granite State
Carriage Association*

